

Manna House Update



Winter
2019/20

In this issue:

- From Our Chair
- In Memorium
- Winter Shelter
- FOMS AGM
- Coffee Morning
- Skills Café
- The Care Café
- The Big Swim
- Save those dates!



It's not
what
you look
at that
matters;
it's what
you see.
—Henry
David
Thoreau

2020: The Year of Vision



The Queen's Award
for Voluntary Service



LLOYDS BANK
FOUNDATION
England & Wales



LOTTERY FUNDED

Proverbs 29:13

The poor man and the oppressor have
this in common:

The LORD gives light to the eyes of both.



Vision

What do you see? The question invites us to lift our eyes and look carefully at what is around us and ahead of us. We're calling 2020 'the Year of Vision' for Manna House because it's important, in order to serve our clients well, to be aware of what's happening around us and as much as possible be ready for what lies ahead.

To have vision also challenges us to think about the future direction of the work, beyond the things we can immediately see. It's too easy to keep doing the same things we've always

done, though some of those things are essential in assisting those who are vulnerable or homeless.

But Manna House has always, at heart, been about pioneering, being creative in our work, so that we're able to encourage and incentivise those who seek our support so they can move forward and not go round the same circle of helplessness, impoverishment and marginalisation over and over again.

Which leads me to appeal to you, our supporters, to join us in the "£1K Challenge". We're inviting you, your family, church, social group, with work colleagues, or in business to partner with us in our future task by taking up the challenge to raise £1000 for Manna House in 2020. How you do that is down to your vision and creativity. If you wish to make a personal donation you may contribute to a "Basket of Manna", where your donation is added to others to make up that £1K basket full.

Full details will shortly be available on our website or contact me at Manna House.

May you know blessing and prosperity for 2020

Colin

Colin Greaves, Chair of Trustees

In Memorium...

Manna House Treasurer & Winter Shelter Volunteer Tony Wade

Manna House services have grown over the years, mirrored behind the scenes in the administrative, legal and financial support required to enable us to operate smoothly and in a financially sound way.

When Tony Wade joined the Board of Trustees in 2012, we had been looking for a Treasurer for some time and our accounts were being produced on a cash basis on a series of Excel spreadsheets. We were looking to transition from a simple charity to a Charitable Company Limited by guarantee and we needed our accounts to be produced on an accruals basis.



Tony's experience both in his working life and his other charitable roles meant he was ably qualified to fulfil this role at Manna House. He set about making the necessary changes and helped us select and implement a new accounting system. This transition took several years, during which time Tony worked closely with our former Chief Officer, Jonathan Brook, who said *'Tony worked long and hard to transform our accounting systems and he did so very quietly and diligently. At that time, as well as changing our charitable status we were also experimenting with a couple of social enterprises - a café and an upcycling operation. In the end neither of these proved sustainable and Tony was very supportive in providing the financial analysis and in helping us to make the sometimes difficult decisions that go with running any organisation. I really appreciated Tony's expert help and insight throughout his time as a Trustee and Treasurer.'*

Tony was a committed and compassionate team member, not just of the Manna House Board of Trustees, but also our Winter Shelter in which he volunteered year after year. Tony's style, love of good food, quiet chuckle and endless patience and sense of fair play are already missed by everyone who knew him. Manna House has been fortunate to count Tony Wade as one of our friends.

In the midst of the Winter Shelter



Providing hot meals, companionship and accommodation for people who cannot find shelter elsewhere in the middle of winter seems a rather big ask, but the 7 venues who are hosting the Winter Shelter this time, as well as all the team leaders and volunteers, are graciously committed to the cause.

It's been a slow start thanks in part to the efficiencies of our Housing Advisor and the Manna House team who had most people accommodated by December 2019. Only 7 people have been assessed for the Winter Shelter so far this season. There were, and still remain, however, those who we know could benefit from the Shelter but who just cannot be persuaded to come in.

Drug and alcohol dependency and mental health anxieties keep some people away from the Shelter, while others prefer their own company and do not want to challenge their tolerance of others. Some people just want to live by their own rules and some feel more independent if they can find a place to crash of their own accord. All deserve our respect and support—we feel certain they know we are here for them if they need us. In the mean time, let's be grateful the weather has not been too awful!

Thank you one and all for your continued support, Penny

Friends Of Manna House News

What a wonderful first year in our new home. Welcome to new members and volunteers, all making such a difference.

Our AGM was a fantastic evening, thanks to our guest speakers, Mal Wadsworth, Andrea Aldridge and Donna Campbell. Their subject was the history of Manna House - what a journey. The story of the Tapestry was fascinating and brought everything to life. Thank you for making it such a great and informative evening.

Our work goes on. People matter and our clients are precious, and you are all so important and involved in supporting and helping people to get the best from life at Manna House !

We would be so pleased to have you support our big SWIM in February 2020. All swimmers, sponsors and spectators, please see below!

Wishing you all Love and Blessings and many thanks.
Looking forward to the New Year together !

Nina Bale, Founder and Coordinator of Friends of Manna House



**Get sponsored!
Get swimming!**

**All proceeds to
support the work
of Manna House!**

The Manna House Big Fun Swim!

Saturday, 22nd February 2020
Kendal Leisure Centre
2 – 4pm

**Join us for this wonderful & wacky fundraising
event!**

01539 725534
www.manna-house.org.uk

Manna House won Torchlight 2019's Best Charity entry! Here is Penny Severn accepting the trophy from Kendal Mayor,



**The Winning
Manna House Float**



The Stephenson Centre, Ann Street, Kendal, Cumbria, LA9 6AA
Tel: 01539 725534

Email: info@manna-house.org.uk

Web site: www.manna-house.org.uk

Manna House (Cumbria), Registered Charity No. 1147785
Company Limited by Guarantee 8041498

Coffee Morning

Saturday 25th January 2020
9.00am – 12noon

Kendal Town Hall

Cake Stall & Lucky Dip
£1 entry

To aid Manna House, your local charity supporting all residents in the South Lakes area, including those who are homeless and vulnerably housed. All proceeds will go towards delivering the Manna House vision of social justice for all!



SKILLS CAFE

10am—12 noon
every week.
Join in and enjoy



Housing Advice, Advocacy and Support



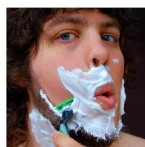
Wednesday Workshops@ Manna House

Why not share your skills and talents with us?
To find out how, contact Clare 01539 725534
clare@manna-house.org.uk

Thanks to
everyone who
contributed to
the fabulous
Christmas
Auction 2019!

We raised a
lovely £1,776.20,
which will help
us deliver our
Client Support
Services into
2020.

Care Café



Today



The Care Café
happens a couple of
times a month,
whenever we can
gather hairdressers,
hand massagers,
manicurists,
podiatrists, dentists,
meditation leaders,
tai-chi experts,
aromatherapists,
crystal healers....are
you one of these?
Please offer us a
session!

Welcome to

**LANCASHIRE
WOMEN** *are here
for you*

They will have an office at the Stephenson Centre every Tuesday!

A decorative border consisting of repeating snowflake or floral-like patterns runs along all four edges of the page, framing the central text.

IMPORTANT DATES

- ⇒ Coffee Morning: Saturday 25/01 @ Kendal Town Hall from 9am—12 noon
- ⇒ Big Swim: Saturday 22/02 @ Kendal Leisure Centre from 2pm—4pm
- ⇒ Provider Forum: Thursdays 30/01, 27/02 & 26/03 @ Stephenson Centre from 10am—12 noon
- ⇒ Client Forum: Tuesday 04/02 @ 3pm
- ⇒ Last Night of Winter Shelter: Sunday 01/03

Current Programmes

Monday :	Women's 'Sew What?' 10.00-12.00pm Men's Group 1-3pm Advice by appointment
Tuesday:	Advice & Drop In lunch 10-3pm
Wednesday :	Skills Café, Advice & Drop-in lunch 10-3pm
Thursday:	Closed except for rough sleepers
Friday:	Drop-in, advice & lunch 10-3pm

Next Edition Update

Copy by 6th March 2020 for Spring edition please to the "Editor"
info@manna-house.org.uk or 01539725534

The Stephenson Centre, Ann Street, Kendal, Cumbria
LA9 6AA www.manna-house.org.uk

Manna House (Cumbria) Registered Charity No 1147785
Company Limited by Guarantee No 8041948

- A decorative border consisting of small, stylized snowflake or star-like patterns arranged in a continuous row along the top, bottom, left, and right margins of the entire page.
- # IMPORTANT DATES
- ⇒ Coffee Morning: Saturday 25/01 @ Kendal Town Hall from 9am—12 noon
 - ⇒ Big Swim: Saturday 22/02 @ Kendal Leisure Centre from 2pm—4pm
 - ⇒ Provider Forum: Thursdays 30/01, 27/02 & 26/03 @ Stephenson Centre from 10am—12 noon
 - ⇒ Client Forum: Tuesday 04/02 @ 3pm
 - ⇒ Last Night of Winter Shelter: Sunday 01/03
- ## Current Programmes
- | | |
|-------------|---|
| Monday : | Women's 'Sew What?' 10.00-12.00pm
Men's Group 1-3pm
Advice by appointment |
| Tuesday: | Advice & Drop In lunch 10-3pm |
| Wednesday : | Skills Café, Advice & Drop-in lunch 10-3pm |
| Thursday: | Closed except for rough sleepers |
| Friday: | Drop-in, advice & lunch 10-3pm |
- ## Next Edition Update
- Copy by 6th March 2020 for Spring edition please to the "Editor"*
info@manna-house.org.uk or 01539725534
- The Stephenson Centre, Ann Street, Kendal, Cumbria
LA9 6AA www.manna-house.org.uk
- Manna House (Cumbria) Registered Charity No 1147785
Company Limited by Guarantee No 8041948

IMPORTANT DATES

- ⇒ Coffee Morning: Saturday 25/01 @ Kendal Town Hall from 9am—12 noon
- ⇒ Big Swim: Saturday 22/02 @ Kendal Leisure Centre from 2pm—4pm
- ⇒ Provider Forum: Thursdays 30/01, 27/02 & 26/03 @ Stephenson Centre from 10am—12 noon
- ⇒ Client Forum: Tuesday 04/02 @ 3pm
- ⇒ Last Night of Winter Shelter: Sunday 01/03

Current Programmes

Monday :	Women's 'Sew What?' 10.00-12.00pm Men's Group 1-3pm Advice by appointment
Tuesday:	Advice & Drop In lunch 10-3pm
Wednesday :	Skills Café, Advice & Drop-in lunch 10-3pm
Thursday:	Closed except for rough sleepers
Friday:	Drop-in, advice & lunch 10-3pm

Next Edition Update

Copy by 6th March 2020 for Spring edition please to the "Editor"
info@manna-house.org.uk or 01539725534

The Stephenson Centre, Ann Street, Kendal, Cumbria
LA9 6AA

www.manna-house.org.uk

Manna House (Cumbria) Registered Charity No 1147785
Company Limited by Guarantee No 8041948

IMPORTANT DATES

- ⇒ Coffee Morning: Saturday 25/01 @ Kendal Town Hall from 9am—12 noon
- ⇒ Big Swim: Saturday 22/02 @ Kendal Leisure Centre from 2pm—4pm
- ⇒ Provider Forum: Thursdays 30/01, 27/02 & 26/03 @ Stephenson Centre from 10am—12 noon
- ⇒ Client Forum: Tuesday 04/02 @ 3pm
- ⇒ Last Night of Winter Shelter: Sunday 01/03

Current Programmes

Monday :	Women's 'Sew What?' 10.00-12.00pm Men's Group 1-3pm Advice by appointment
Tuesday:	Advice & Drop In lunch 10-3pm
Wednesday :	Skills Café, Advice & Drop-in lunch 10-3pm
Thursday:	Closed except for rough sleepers
Friday:	Drop-in, advice & lunch 10-3pm

Next Edition Update

Copy by 6th March 2020 for Spring edition please to the "Editor"
info@manna-house.org.uk or 01539725534

The Stephenson Centre, Ann Street, Kendal, Cumbria
LA9 6AA

www.manna-house.org.uk

Manna House (Cumbria) Registered Charity No 1147785
Company Limited by Guarantee No 8041948

IMPORTANT DATES

- ⇒ Coffee Morning: Saturday 25/01 @ Kendal Town Hall from 9am—12 noon
- ⇒ Big Swim: Saturday 22/02 @ Kendal Leisure Centre from 2pm—4pm
- ⇒ Provider Forum: Thursdays 30/01, 27/02 & 26/03 @ Stephenson Centre from 10am—12 noon
- ⇒ Client Forum: Tuesday 04/02 @ 3pm
- ⇒ Last Night of Winter Shelter: Sunday 01/03

Current Programmes

Monday :	Women's 'Sew What?' 10.00-12.00pm Men's Group 1-3pm Advice by appointment
Tuesday:	Advice & Drop In lunch 10-3pm
Wednesday :	Skills Café, Advice & Drop-in lunch 10-3pm
Thursday:	Closed except for rough sleepers
Friday:	Drop-in, advice & lunch 10-3pm

Next Edition Update

Copy by 6th March 2020 for Spring edition please to the "Editor"
info@manna-house.org.uk or 01539725534

The Stephenson Centre, Ann Street, Kendal, Cumbria
LA9 6AA

www.manna-house.org.uk

Manna House (Cumbria) Registered Charity No 1147785
Company Limited by Guarantee No 8041948

A decorative border consisting of repeating snowflake or floral-like patterns runs along all four edges of the page, framing the central text.

IMPORTANT DATES

- ⇒ Coffee Morning: Saturday 25/01 @ Kendal Town Hall from 9am—12 noon
- ⇒ Big Swim: Saturday 22/02 @ Kendal Leisure Centre from 2pm—4pm
- ⇒ Provider Forum: Thursdays 30/01, 27/02 & 26/03 @ Stephenson Centre from 10am—12 noon
- ⇒ Client Forum: Tuesday 04/02 @ 3pm
- ⇒ Last Night of Winter Shelter: Sunday 01/03

Current Programmes

Monday :	Women's 'Sew What?' 10.00-12.00pm Men's Group 1-3pm Advice by appointment
Tuesday:	Advice & Drop In lunch 10-3pm
Wednesday :	Skills Café, Advice & Drop-in lunch 10-3pm
Thursday:	Closed except for rough sleepers
Friday:	Drop-in, advice & lunch 10-3pm

Next Edition Update

Copy by 6th March 2020 for Spring edition please to the "Editor"
info@manna-house.org.uk or 01539725534

The Stephenson Centre, Ann Street, Kendal, Cumbria
LA9 6AA www.manna-house.org.uk

Manna House (Cumbria) Registered Charity No 1147785
Company Limited by Guarantee No 8041948

IMPORTANT DATES

- ⇒ Coffee Morning: Saturday 25/01 @ Kendal Town Hall from 9am—12 noon
- ⇒ Big Swim: Saturday 22/02 @ Kendal Leisure Centre from 2pm—4pm
- ⇒ Provider Forum: Thursdays 30/01, 27/02 & 26/03 @ Stephenson Centre from 10am—12 noon
- ⇒ Client Forum: Tuesday 04/02 @ 3pm
- ⇒ Last Night of Winter Shelter: Sunday 01/03

Current Programmes

Monday :	Women's 'Sew What?' 10.00-12.00pm Men's Group 1-3pm Advice by appointment
Tuesday:	Advice & Drop In lunch 10-3pm
Wednesday :	Skills Café, Advice & Drop-in lunch 10-3pm
Thursday:	Closed except for rough sleepers
Friday:	Drop-in, advice & lunch 10-3pm

Next Edition Update

Copy by 6th March 2020 for Spring edition please to the "Editor"
info@manna-house.org.uk or 01539725534

The Stephenson Centre, Ann Street, Kendal, Cumbria
LA9 6AA

www.manna-house.org.uk

Manna House (Cumbria) Registered Charity No 1147785
Company Limited by Guarantee No 8041948

IMPORTANT DATES

- ⇒ Coffee Morning: Saturday 25/01 @ Kendal Town Hall from 9am—12 noon
- ⇒ Big Swim: Saturday 22/02 @ Kendal Leisure Centre from 2pm—4pm
- ⇒ Provider Forum: Thursdays 30/01, 27/02 & 26/03 @ Stephenson Centre from 10am—12 noon
- ⇒ Client Forum: Tuesday 04/02 @ 3pm
- ⇒ Last Night of Winter Shelter: Sunday 01/03

Current Programmes

Monday :	Women's 'Sew What?' 10.00-12.00pm Men's Group 1-3pm Advice by appointment
Tuesday:	Advice & Drop In lunch 10-3pm
Wednesday :	Skills Café, Advice & Drop-in lunch 10-3pm
Thursday:	Closed except for rough sleepers
Friday:	Drop-in, advice & lunch 10-3pm

Next Edition Update

Copy by 6th March 2020 for Spring edition please to the "Editor"
info@manna-house.org.uk or 01539725534

The Stephenson Centre, Ann Street, Kendal, Cumbria
LA9 6AA

www.manna-house.org.uk

Manna House (Cumbria) Registered Charity No 1147785
Company Limited by Guarantee No 8041948